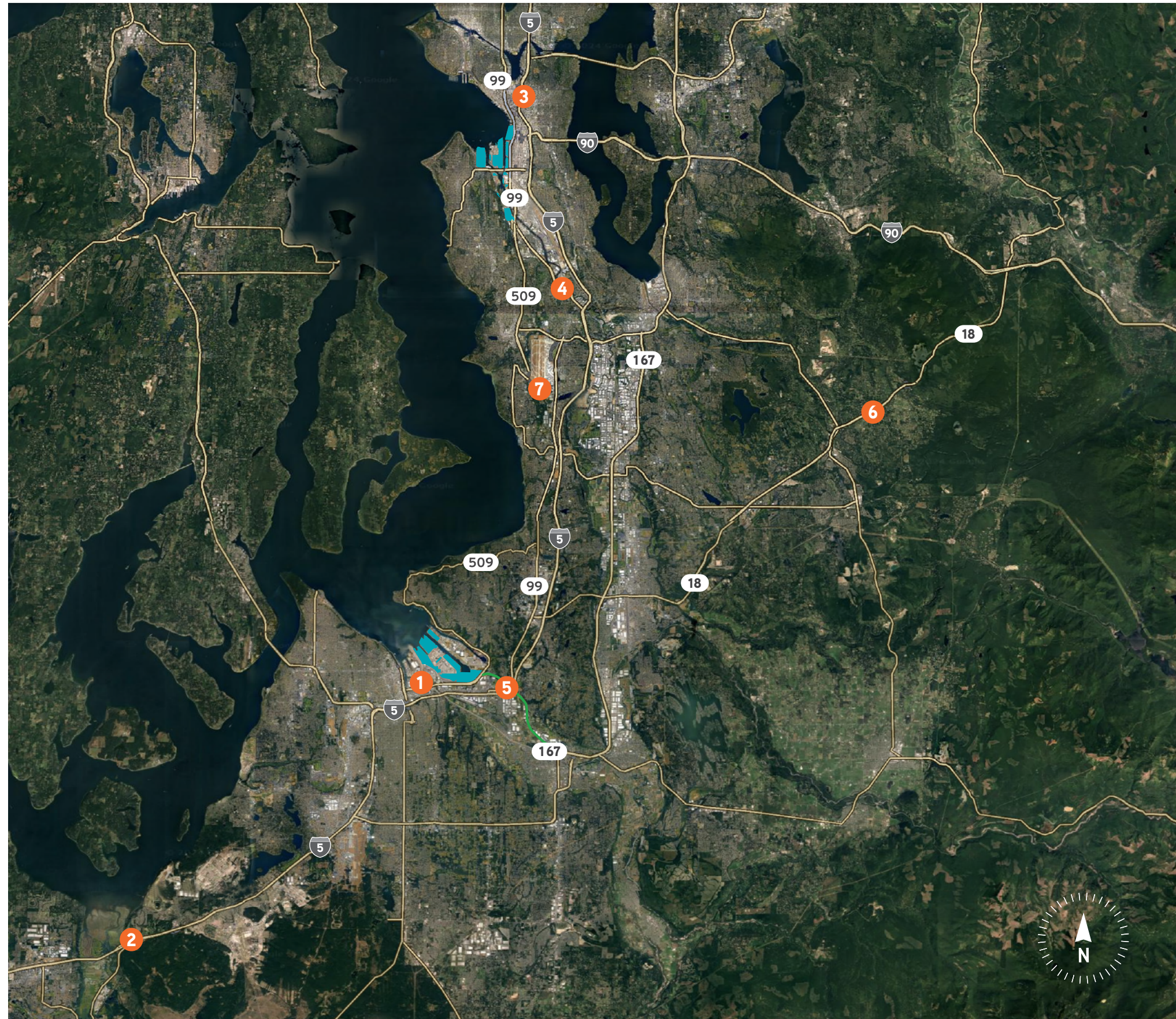


Key Regional Transportation Projects



LEGEND

- 1 Fishing Wars Memorial Bridge
- 2 I-5 Marvin Rd to Mounts Rd
- 3 I-5 Ramp Study
- 4 Reconnect South Park
- 5 SR 167 Completion
- 6 SR 18 Widening to I-90
- 7 SR 509 Completion